



'A L O H I L A N I
R E S O R T

W A I K I K I B E A C H



This property is dedicated to
Queen Lili'uokalani and her love
and passion for Hawaii

The 'Alohilani Story

*LONGSTANDING HOTEL TRANSFORMS
INTO A MODERN HAWAIIAN WONDER*

CONTENTS

I THIS IS THE PLACE

II A PROPERTY REIMAGINED

III THE ROOMS

IV SOCIAL SPACES

V FARE

VI MEETINGS AND EVENTS

VII ART ACTIVATIONS

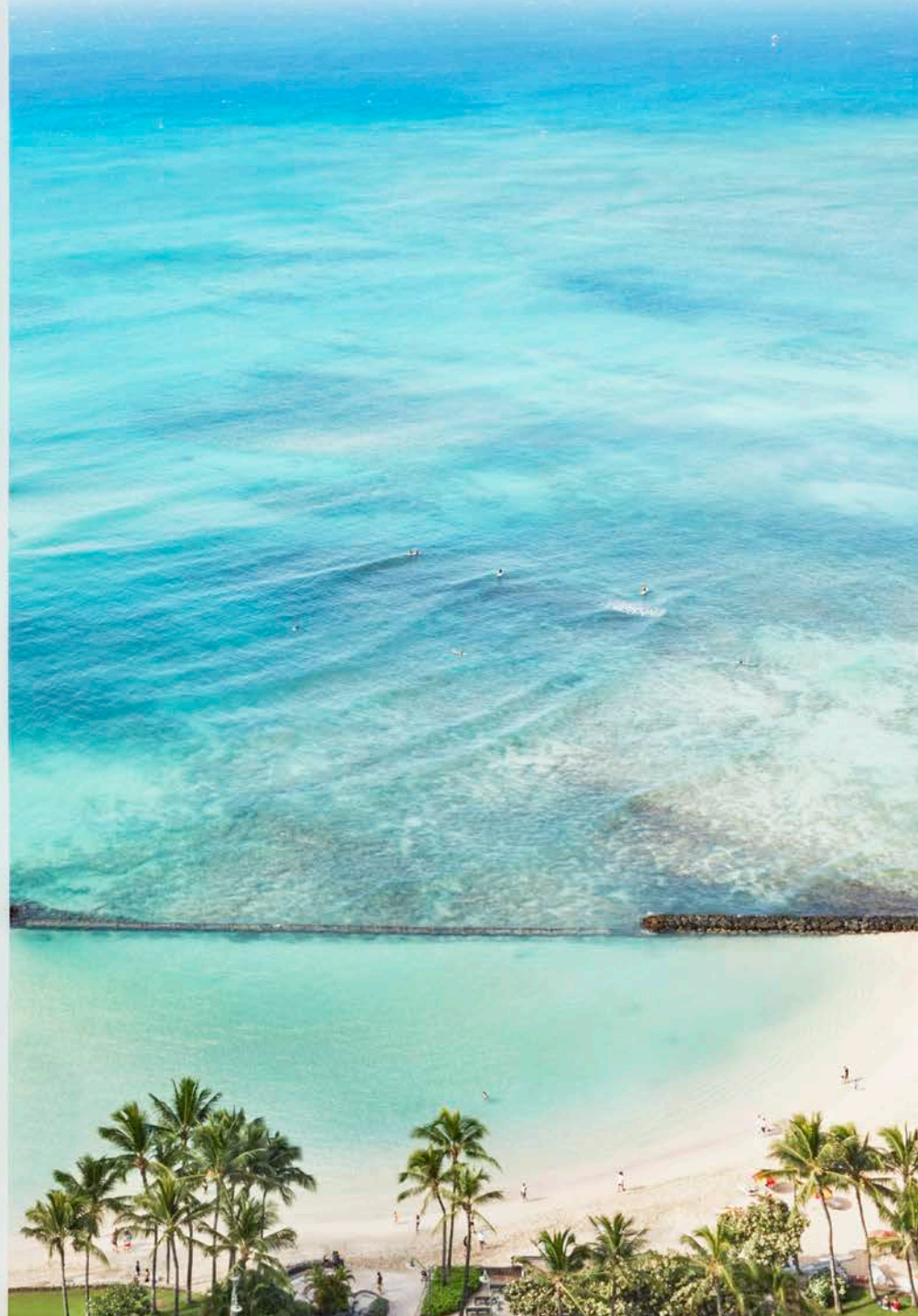
VIII TRAVEL & ACCOLADES

THIS IS THE PLACE



'Alohilani Resort Waikiki Beach is a cosmopolitan jewel located on the fashionable Kalakaua Avenue, presiding over the most famous shoreline in the world. 'Alohilani Resort sits where the city meets the sand with a sophisticated, awe-inspiring design that pays homage to Hawaii's rich cultural heritage. Surrounded by serene blue and green ocean, Diamond Head and Waikiki, 'Alohilani is a modern oasis that offers a refreshing balance of energy and relaxation in a lively, urban location.

'Alohilani Resort is a destination for travelers and locals alike with exclusive amenities including two restaurants by internationally acclaimed Iron Chef Masaharu Morimoto, a 17,000-square-foot seascape pool deck, a captivating 280,000-gallon Oceanarium, a rooftop fitness experience including, sunset yoga, tennis lessons, batting cages and more.



A REIMAGINED SPACE



Five years in the making, 'Alohilani Resort has been transformed through a \$125 million redevelopment into a 4½ star resort with unparalleled offerings. Acclaimed design firm Rockwell Group created the resort's dramatic lobby, restaurants, amenities, infinity pool and deck, guest rooms and suites; and architectural firm Pacific Asia Design Group enhanced the grand and refined space with elegant touches that evoke the celebrated Hawaiian spirit.

A commanding porte-cochère entrance welcomes guests into a captivating lobby with an open floor plan, soaring floor-to-ceiling window walls, and a striking series of six 18' tall pillars hand-wrapped in basket-woven teak. A custom coral wall sculpture named "MAKAI" by famed artist Nina Helms is the signature piece of the reception area, offering a poetic interpretation of the natural coral wonders that lie beneath the ocean's surface.

The all-new guest rooms and suites have private lanais, or verandas, and offer expansive ocean, Diamond Head and city views. An airy, guest room experience is inspired by Oahu's serene landscape and pairs rich natural materials with a soothing palette of whites and taupes peppered with bursts of blues and greens.

The resort also offers stylish one-bedroom suites with elegant living rooms accented with large-scale black and white photography. A dining nook and wet bar plus a crisp bathroom with dual vanities, wet room with a rain shower and soaking tub complete the luxurious envelope. All guest rooms and suites feature Malie Organics' Koke'e scented bath products and have a custom blended coffee program.





THE ROOMS

Opening rates start at \$309 per night with suite rates starting at \$899 per night.

STANDARD

Standard guest rooms are located on the lower floors with city views, many offer their own private lanai, approximately 330 square feet of space and one king bed or two queen beds.

PARTIAL OCEAN VIEW

Partial Ocean View guest rooms offer city and ocean views, a private lanai, approximately 330 square feet of space and one king bed or two queen beds.

OCEAN VIEW

Ocean View guestrooms offer various Waikiki Beach vistas along with views of the city or mountains, a private lanai, approximately 330 square feet of space and one king bed or two queen beds.

DIAMOND HEAD OCEAN VIEW

Diamond Head Ocean View guestrooms offer spectacular views of the ocean and Diamond Head, a private lanai, approximately 330 square feet of space, and one king bed or two queen beds.

PREMIER OCEAN FRONT

Premier Ocean Front guestrooms offer full views of the ocean and Waikiki Beach, a private lanai, approximately 330 square feet of space, and one king bed or two queen beds. Added amenities include a vanity and bidet along with luxurious bathrobes and slippers.

SEASCAPE SUITE

The one-bedroom Seascape Suites overlook Diamond Head and provide spectacular partial ocean views. With a separate and expansive living room, the Seascape Suite encourages tranquil relaxation featuring a marble-swathed bathroom with a soaking tub, a 100-square-foot private lanai, a Harman Kardon sound system, and 660 square feet of living space that includes a king bed and sleeper sofa.

BEACHSIDE SUITE

The luxurious one-bedroom Beachside Suites offer spectacular, unobstructed views of the Pacific Ocean and Waikiki Beach. With extended lanais that provide seamless indoor-outdoor living spaces, the suites offer a separate living space, a spa-like marble bath with a soaking tub and a Harman Kardon sound system. With more than 700 square feet of living space, the Beachside Suites include a king bed and a sleeper sofa. These Beachside Suites can also be connected to a Premier Ocean Front guestroom, creating a two bedroom suite.



SOCIAL SPACES



SEASCAPE POOL DECK

A see-and-be-seen pool deck with loungers reserved for guests only on the fifth floor features a heated saltwater infinity pool along with chic social and relaxation spaces. Whether relaxing during the day or playing at night, this dynamic destination is incomparable and unforgettable. The pool experience also includes Swell Bar, cabanas perched atop reflecting pools, tiered day beds, custom teak furniture, driftwood sculptures, lanterns and fire pits. The infinity pool and hot tub are open to adults and children 5-12 years old with an accompanying adult.

OCEANARIUM

Iconic to the property's history, the newly restored 280,000-gallon saltwater Oceanarium is home to more than 600 indigenous marine animals. Guests can sit back and drift away watching the mesmerizing schools of native Hawaiian reef fish. Twice daily at 10:30am and 2:30pm, an 'Alohilani scuba diver feeds the fish and occasionally interacts with guests so they can learn about the wonders of the Hawaiian undersea.

ISLAND CLUB AND SPA

'Alohilani Resort is home to Island Club and Spa, a fitness and spa experience that includes a state-of-the-art fitness center on the third floor with a movement studio for daily classes and Fitness on Demand virtual classes. Enhancing the recreational offerings are two rooftop full-size clay tennis courts, batting cages and training turf, distinct features for a resort in Waikiki Beach. Additional key offerings include sunset yoga and TRX classes overlooking the ocean and three spa treatment rooms, including, a couple's room for massages, body treatments and facials.



SHOPS AT 'ALOHILANI

Guests can stroll through the retail boutiques featuring a curated mix of local and international brands including Beachside Luxe, Kolohe Jewelry, Rip Curl, Chapel Hats, Kai Coffee, and more.

BUSINESS CENTER

Our residential-style business center features Mac computers and printers to stay connected in a stylish lounge environment.

CONCIERGE

Local experts are available to curate unforgettable experiences from the best hikes on Oahu to surfing and stand-up paddleboard lessons, island sightseeing, cultural events, restaurant recommendations, and more.





FARE

'Alohilani Resort Waikiki Beach features four new dining outlets, including two Asian restaurants from Iron Chef Masaharu Morimoto.

MORIMOTO ASIA

Morimoto Asia seamlessly integrates Iron Chef Masaharu Morimoto's world-renowned Western and traditional Asian ingredients, with unmatched creativity and innovation. This indoor-outdoor dining destination looks out over the ocean and features a gleaming stainless steel and glass exhibition kitchen, a sleek bungalow-style bar, and gracious outdoor lanais with cuisine ranging from Peking duck to dim sum and traditional wok fried dishes.





MOMOSAN

Located at street level on the corner of Kalakaua Ave. and Liliuokalani Ave. steps from the sand, Momosan beckons both visitors and locals with scents of yakitori drifting to the beach. The fun and casual dining experience puts noodles front and center and features signature Morimoto sake and beer selections. This breakfast, lunch and dinner restaurant serves small plates and appetizers, Chef Morimoto's unique take on a local favorite garlic shrimp, original salads, classic izakaya-style rice dishes, yakitori and flavor-forward ramen dishes.

SWELL POOL AND BAR

SWELL Bar at the seascape pool deck serves island craft cocktails and an all-day menu featuring Oahu favorites. With both dramatic city and ocean views, the deck is an escape that will seduce and relax with private cabanas and lounge areas with fire pits. An unrivaled destination with one of the most impressive cocktail menus in Honolulu, as the sun sets, SWELL transitions into a vibrant, evening hot spot with live, sought-after musical acts.

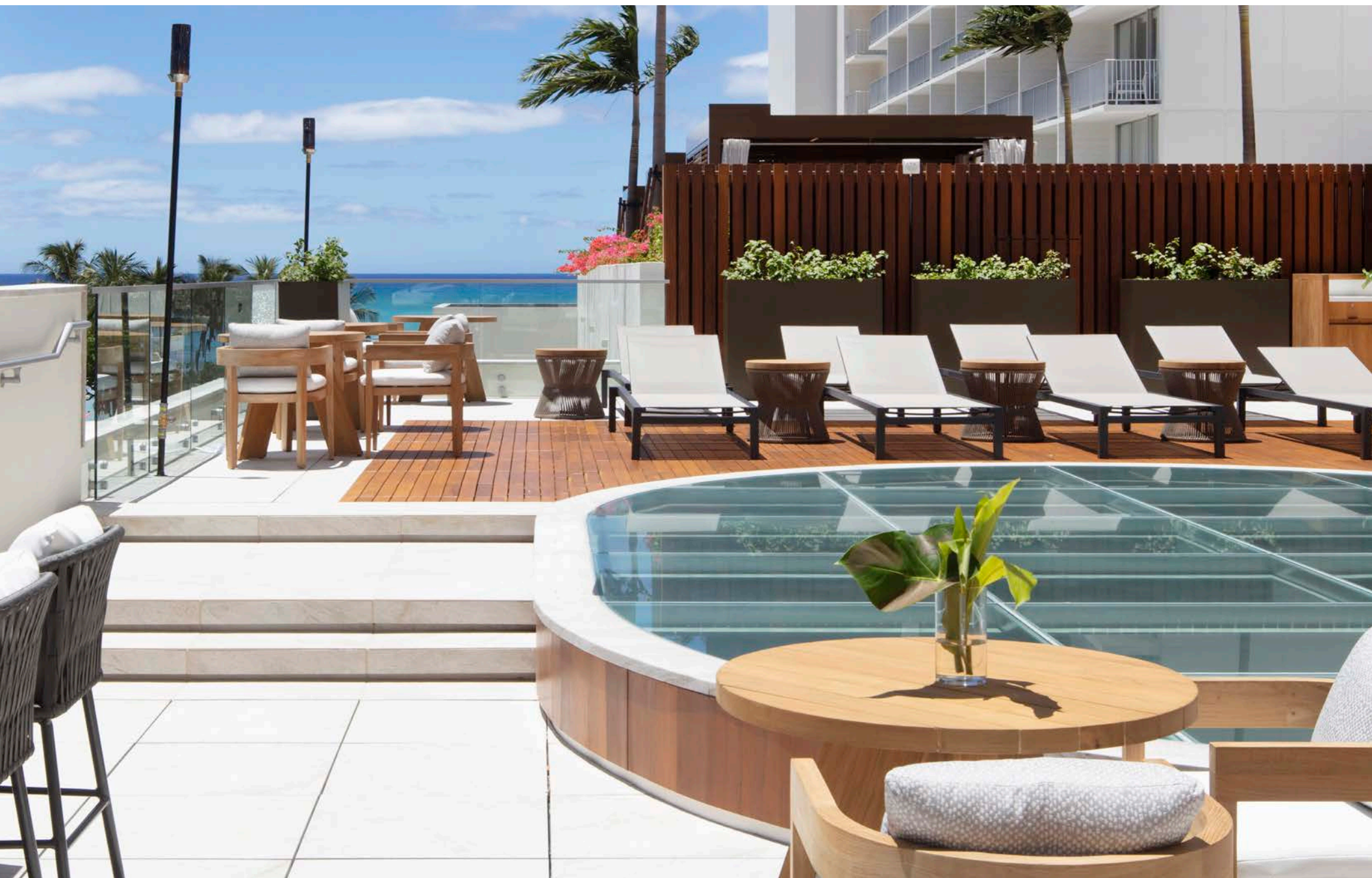
O BAR

Anchored by the two-story Oceanarium teeming with tropical marine life, O Bar is the resort's panoramic gathering place from meetings during the day to cherished time with family, or for a night out with friends. O Bar offers ocean-inspired craft cocktails, beer, wine, and live music to enjoy the awe-inspiring Hawaiian undersea.

IN-ROOM DINING

SWELL Bar and Momosan offer in-room delivery as a knock and drop option. Enjoy delectable fare from the comfort of your private lanai overlooking Waikiki Beach, Diamond Head or Honolulu.





LONGBOARD CLUB

Longboard Club is a private indoor/outdoor setting for guests only to unwind and take part in curated offerings designed to further enrich their stay. An elegant and functional design, personalized service and a culinary program filled with international and local delights take centerstage including a design-your-own acai bowl offering and 16-bottle wine Cruvinet. Longboard Club is available for guests who book club level access.

SUNDAY CLUB AT LONGBOARD

Seasonally at Longboard Club, hotel guests who have not booked club level access and outside visitors are invited to experience Sunday Club brunch. Highlights include an exclusive brunch menu, beats by Hawaii's own Big Wave Surf Champion, DJ KK, access to Longboard's amenities including private cabanas, and after brunch, the heated saltwater infinity pool at Swell.





MEETINGS AND EVENTS

'Alohilani Resort Waikiki Beach sets an idyllic scene for memorable, aloha-infused weddings, honeymoons and celebrations of all sizes. A variety of indoor and outdoor wedding and reception spaces, including Swell Pool and Bar overlooking Waikiki Beach and Longboard Club, complement a series of upscale wedding packages, world-class catering and expert in-house wedding planning services.

Groups and gatherings have access to more than 20,000 square feet of redeveloped sustainably-focused meeting and event space across a variety of indoor and outdoor options. From social events and weddings to meetings, retreats and conferences, the resort offers new and enhanced meeting rooms of more than 1,500 square feet to the all-new 12,000 square foot ballroom, the third largest in Waikiki.

ART ACTIVATIONS



GREETINGS FROM HAWAII

'Alohilani commissioned the "Greetings from Hawaii" 50-by-75-foot ground-installation from artist Victor Ving and photographer Lisa Beggs as part of their "Greetings Tour," a cross-country mural project creating new city landmarks through public art. Visitors can see the mural from the resort's pool deck, Beachside tower lanais and soon Google Earth.

LIGHT MONUMENT

The awe-inspiring beauty of Oahu dances across more than 100 feet of 'Alohilani's beachside tower wall with exclusive projections by local artist, Joseph Pa'ahana. "Light Monument" is a large-scale short-film series seen at Swell Pool and Bar depicting the natural wonder of the island through light in place.

DELIVERY

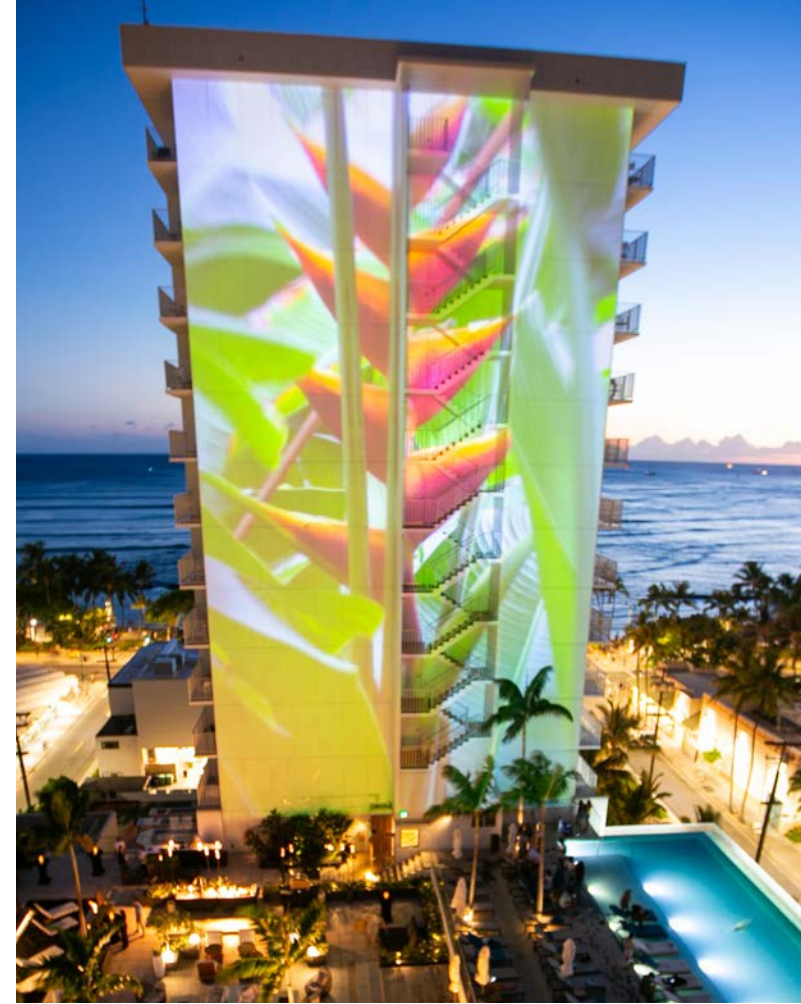
Artist, Kris Goto, took inspiration from marine life, 'Alohilani's reforestation commitment and surf culture to create a whimsical mural adjacent to the Monkeypod Kids' Club. Children can swim in the family pool alongside handpainted pufferfish and trees.

MAKAI

As guests arrive at 'Alohilani, they're welcomed by a remarkable under-the-sea interpretation created by renowned New York sculptural illustrator, Nina Helms. The one-of-a-kind commissioned bouquet of coral that adorns the entire back wall of reception is titled "Makai," Hawaiian for "ocean."

AHA'ULA CLOAK

For centuries, the Hawaiian islands were ruled by a council of 14 chiefs called the *aha'ula*. As part of 'Alohilani's partnership with the Hawaiian Legacy Reforestation Initiative, the resort is home to a replica of an *aha'ula* cloak as a tribute to the Hawaiian heritage –and our promise to protect the islands we call home.



TRAVEL & ACCOLADES

Waikiki Beach has uniquely temperate island weather that falls into two main seasons: during June through October, the climate is a bit warmer and drier with daily high temperatures of about 84 degrees Fahrenheit/28 degrees Celsius and lows of about 70 degrees Fahrenheit/21 degrees Celsius at night; during November through May, the climate is considered cooler by Hawaii standards with daily high temperatures of about 81 degrees Fahrenheit/27 degrees Celsius and lows of about 65 degrees Fahrenheit/18 degrees Celsius at night.

Direct air carriers include Alaska Airlines, American Airlines, Delta, Hawaiian Airlines, Southwest Airlines, United, Japan Airlines, ANA, Korean Airlines, Qantas, Air New Zealand, Air Canada and Westjet.



"THE BEST RESORTS IN HAWAII"

Condé Nast Traveler Readers' Choice Awards, 2021, 2020, 2019, 2018

"WORLD'S BEST AWARDS"

Travel + Leisure's 2020 World's Best Awards, 2020

"BEST HOTELS IN HONOLULU"

U.S. News & World Report, 2022, 2021

"FAVORITE INDEPENDENT PROPERTY"

Preferred Hotels & Resorts iPrefer Members' Choice Awards, 2021

"TRIPADVISOR TRAVELERS' CHOICE"

TripAdvisor.com, 2020

"BEST OF OAHU HOTEL & RESORTS"

Hawaii Magazine Readers' Choice Awards, 2021, 2020, 2019

"THE BEST PLACES TO STAY IN HONOLULU"

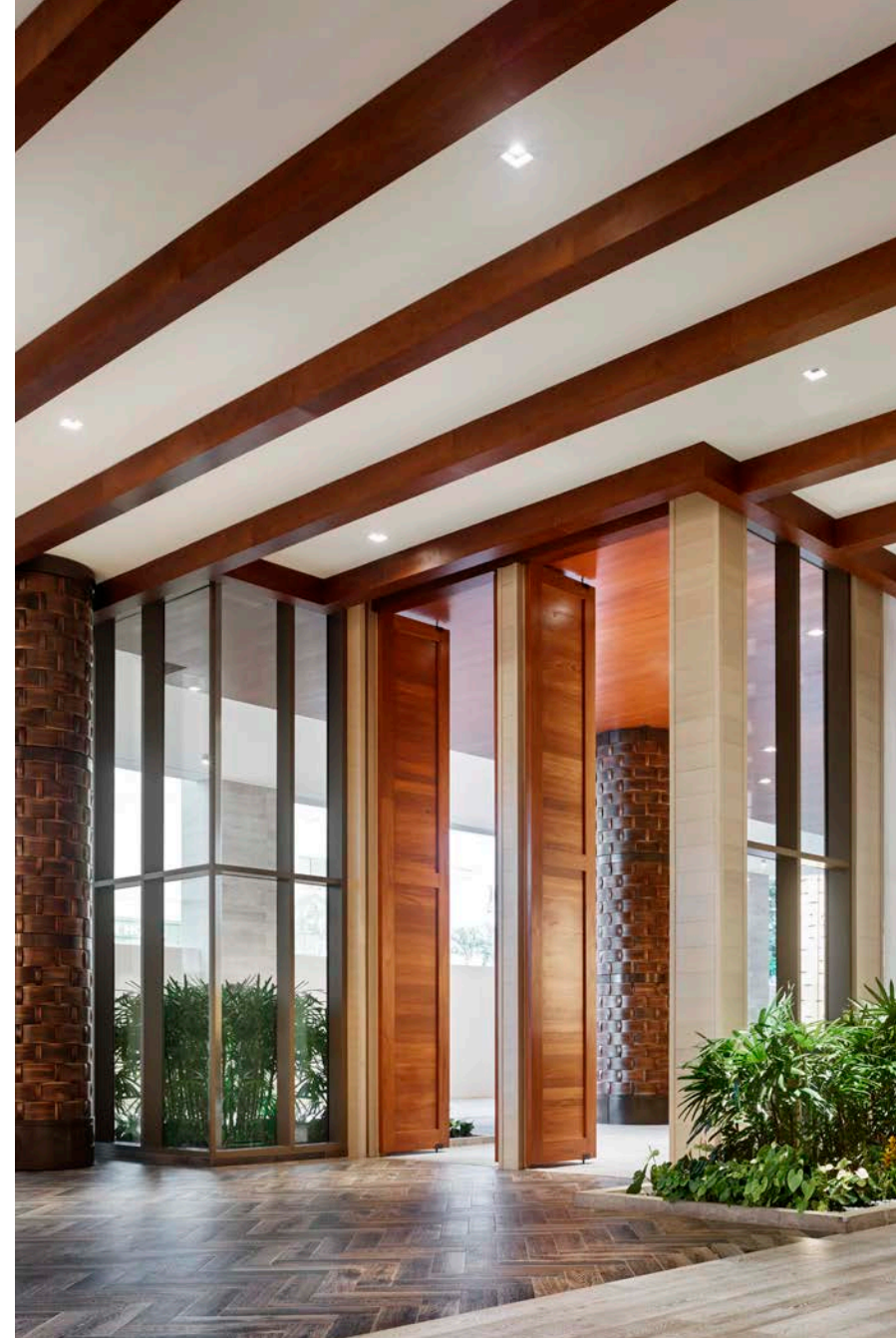
Forbes, July 2019

"MOST UNIQUE AND INSTAGRAM- WORTHY FACILITIES"

Departure's Magazine, June 2019

"THE 10 MOST INSTAGRAM-WORTHY POOLS IN AMERICA"

Instyle.com, Jan. 2018



CONTACT

ADDRESS

2490 Kalakaua Avenue
Honolulu, HI 96815

WEB / SOCIAL

alohilaniresort.com / [@alohilaniresort](https://www.instagram.com/alohilaniresort)

CONTACT YOUR ACCOUNT DIRECTOR

tasales@highgate.com

MANAGEMENT

Highgate, a premier real estate investment and hospitality management company whose portfolio includes more than 300+ properties in gateway cities worldwide.