

THE TWIN FIN

2570 Kalakaua Avenue
 Honolulu, HI 96815
 TAsales@highgate.com
 TwinFinWaikiki.com

Amandeus(1A): HNLWBH | Sabre (AA): 33860 |
 Galileo/Apollo (UA): 684-14 Woldspan(1P): HNLWB |
 Pedg ADS (WB): 8017 | Travelweb (HD): 8017



HOTEL INFORMATION

#Rooms	645*
*56% Double Beds / 44% King Beds	
#Floors	25
#Buildings	1
#Elevators	5
Check In	4:00pm
Check Out	11:00pm

PROPERTY SERVICES

- Children stay free
- Guest activities desk
- Daily Housekeeping
- Dry-cleaning (\$)
- Valet Parking (\$)
- Restaurants
- Sundry store
- Meeting Room (\$)

AMENITIES

- Private step-out lanai
- Flat screen TV
- High-speed WiFi internet access
- Daily credits to Waikiki Beach Candy beach and activity rental center
- Reef friendly sunscreen lotion
- Two (2) bottles of Mananalu Pure Water per stay, refillable at our filtered water stations
- Shampoo, conditioner, body wash, body lotion and face bar
- Keurig coffee maker in room (coffee replenished daily)
- Toll free, local calls and up to 60 minutes of complimentary domestic and international calls
- In-room safe
- Pool towels for day use
- Fitness Center, Open daily 5:00 am - 10:00 pm



THE TWIN FIN

2570 Kalakaua Avenue
Honolulu, HI 96815
TASales@highgate.com
TwinFinWaikiki.com

Amandeus(1A): HNLWBH | Sabre (AA): 33860 |
Galileo/Apollo (UA): 684-14- Woldspan(1P): HNLWB |
Pedg ADS (WB): 8017 | Travelweb (HD): 8017



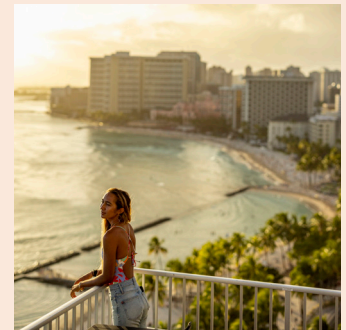
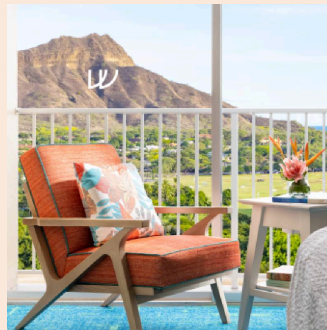
HOT SELLING TIPS

- Prime Location
- Directly across from Waikiki Beach
- Oceanfront rooms offer unobstructed panoramic views of Waikiki Beach
- On-site restaurants: Tiki's Grill & Bar, Wolfgang Puck, The Coconut Club and Café Glace Hawaii
- Retail space: Ku'ai Market, Kai Coconuts and Beach Candy
- 92% of the rooms offer full or partial ocean views
- Heated swimming pool
- Exclusive guest-only access to Coconut Club located on the 21st floor with unrivaled panoramic views of Waikiki Beach (must be booked in club room categories)

LIFE IS SWELL / OCEANFRONT IN WAIKIKI

Surfing was cultivated in our backyard and shared by Duke Kahanamoku with the world, so of course we embrace its energy and attitude and celebrate the timeless charm of surfing's golden days. We welcome the curious. We invite those who long to experience and be part of the story of Waikiki—the birthplace of not just modern surfing but a lifestyle.

We're a retreat. A place to relax and take in the beauty of Waikiki's iconic sights and rolling swells, from sunrise to sunset. We're a gathering place to connect with others and share memorable, meaningful moments. We're a hub for discovering local music, art, and a lasting connection with our island community. With stunning, front-row views of Waikiki Beach, we're a place to reflect on the events of the day and plan the adventures that lie ahead.



Check In

Paddle Out